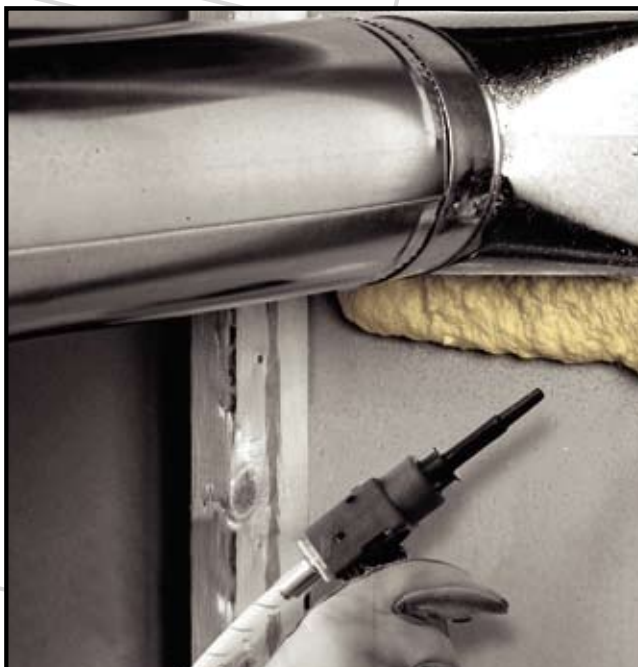




FOAM KIT

**DISPOSABLE
POLYURETHANE
FOAM SYSTEMS**



Touch 'n Seal® Foam Kits are designed for use in commercial sealing, insulating, patching and filling applications. Portable and disposable, these two-component foam systems provide a quick, consistent flow of polyurethane foam that dries in less than one minute.

- Completely self-contained units
- Spray applied
- Includes new anti-crossover P2 gun*
- Pre-connected hoses for fast, easy set-up (single carton units)
- Multiple formulas to choose from





FOAM KITS

Spray applied, 2-component polyurethane foam

PRE-CONNECTED HOSES



- Portable, disposable, self-contained units
- High closed cell content of cured foam makes it suitable as a general sealant to prevent air leakage in cold storage and other insulating applications
- Foam expands 30 times, dries in less than 1 minute
- **Rip 'n Go** set-up provides easy access to new, comfort-grip handle (single carton units)
- Pre-connected hoses facilitate faster set-up (single carton units)
- Upright assembly
- No CFC's or urea formaldehyde
- Kits include A & B cylinders, P2 applicator gun with 10 ft. hoses, extra spray nozzles, assembly wrench, latex gloves, lubricant and trilingual instructions (English, Spanish, French)
- Clear, color-coded hoses
- Available in standard, fire retardant or high density formulas
- New packaging includes easy-to-identify "A" and "B" cartons (on 2-carton units) and illustrated instructions

Yield Estimates:		
	Board Feet	Cubic Feet
Foam Kit 110	110	9.1
Foam Kit 120	120	10.0
Foam Kit 200 / 200FR	200	16.6
Foam Kit 600 / 600FR	600	50.0

Note: Theoretical yield is used as an industry standard to represent the size of 2-component foam kits. The calculation is based on ideal laboratory conditions, does not include blowing agent loss, and may vary according to application method or environmental factors.

PRODUCT	ITEM NO.	CARTONS PER KIT	TOTAL WT. (LBS)	CARTONS / PALLET	KITS / PALLET	
STANDARD FORMULA	FOAM KIT 110	4004520110	1	26	36	36
"	FOAM KIT 200	4004520200	1	38	36	36
"	FOAM KIT 600	4004520600	2 (A & B)	108	32	16
FIRE RETARDANT	FOAM KIT 200FR	4004001200	1	38	36	36
"	FOAM KIT 600FR	4004521600	2 (A & B)	105	32	16
HIGH DENSITY (3.0 pcf)	FOAM KIT 120	4004523120	1	36	36	36
PRODUCT	ITEM NO.	CASE PACK	CASE WT. (LBS)			
FOAM KIT Accessory Pack / 10 ft. hose	4004529914	1	5	---	---	
FOAM KIT Accessory Pack / 30 ft. hose	4004529937	1	10	---	---	
P2 GUN / 10 ft. hose	4004529960	1	3	---	---	
NOZZLE KIT / 2X-Purple (conical spray)	4004529930	50 / bag	5	---	---	
NOZZLE KIT / 2X-Yellow (fan spray)	4004529940	50 / bag	5	---	---	



Self-contained units feature fast, easy set-up.



Portable and disposable, Touch 'n Seal Foam Kits are easy to move around the job site.



Multiple sizes and formulas available.

TECHNICAL DATA

STANDARD formula

- Density (ASTM D-1622): 1.75 +/- 0.2 pcf
- K-Factor (ASTM C-518): 0.14 BTU • in • hr⁻¹ • ft⁻¹ • F⁻¹
- R-Value (ASTM C-518): 7.12 per inch
- Compressive Strength (ASTM D-1621):
10% parallel: 19 psi, 10% perpendicular: 13.4 psi
- Tensile Strength: (ASTM D-1623): 30 psi
- Dimensional Stability (ASTM D-2126):
-40°F, 2 weeks: +.88% volume change
158°F, 100% RH, 2 weeks: +14% volume change
- Water Absorption (ASTM D-2842): 1.0-3.5% vol
- Closed Cell Content (ASTM D-2856): 90% minimum
- Maximum Service Temperature for Cured Foam: 240°F (116°C)
- Shelf Life: 18 months
- Use all contents within 30 days of initial dispensing

FIRE RETARDANT formula

- Class 1 Flame Retardant
ASTM E-84: FSI 15/SMK 450 at 2 inch thickness
- Radiation Panel Burning Test
ASTM E-162: FSI 6
- Density (ASTM D-1622): 1.75 +/- 0.2 pcf
- K-Factor (ASTM C-518): 0.16 BTU • in • hr⁻¹ • ft⁻¹ • F⁻¹
- R-Value (ASTM C-518): 6.23 per inch
- Compressive Strength (ASTM D-1621):
10% parallel: 13.2 psi, 10% perpendicular 6.8 psi
- Tensile Strength: (ASTM D-1623): 22 psi
- Dimensional Stability (ASTM D-2126):
-40°F, 2 weeks: +.88% volume change
158°F, 100% RH, 2 weeks: +14% volume change
- Water Absorption (ASTM D-2842): 1.0-3.5% vol
- Closed Cell Content (ASTM D-2856): 90% minimum
- Maximum Service Temperature for Cured Foam: 240°F (116°C)
- Shelf Life: 12 months
- Use all contents within 30 days of initial dispensing

HIGH DENSITY formula

- Density (ASTM D-1622): 3.0 pcf
- K-Factor (ASTM C-177): approx. 0.17 BTU • in • hr⁻¹ • ft⁻¹ • F⁻¹
- R-Value (ASTM C-518): 5.9
- Compressive Strength (ASTM D-1621): 40 psi
- Water Absorption (ASTM D-2842): 0.5-1.0%
- Closed Cell Content (ASTM D-2856): 90% minimum
- Maximum Service Temperature for Cured Foam: 240°F (116°C)
- Shelf Life: 18 months
- Use all contents within 30 days of initial dispensing

ACCESSORIES

- FOAM KIT Accessory Pack: includes P2 gun with 10 ft. hose and accessory bag (extra nozzles, latex gloves, assembly wrench, o-ring, lubricant). #4004529914
- FOAM KIT Accessory Pack: same as above but with 30 ft. hose #4004529937
- P2 Gun with 10 ft. hose: #4004529960
- NOZZLE KIT / 2X-Purple: conical spray nozzles for use with P2 guns #4004529930
- NOZZLE KIT / 2X-Yellow: fan spray nozzles for use with P2 guns #4004529940



FOAM KITS

Spray applied, 2-component polyurethane foam



FOAM KIT 15

- Upside down dispensing
- Includes applicator and longer, more flexible hoses
- No CFC's or urea formaldehyde
- Trilingual instructions (English, Spanish, French)
- 15 ft. hoses
- Standard formula

TECHNICAL DATA

- Density (ASTM D-1622): 1.75 +/- 0.2 pcf
- K-Factor (ASTM C-518): 0.18 BTU • in • hr⁻¹ • ft⁻¹ • F⁻¹
- R-Value (ASTM C-518): 5.5 per inch
- Compressive Strength (ASTM D-1621):
10% parallel: 17.6 psi, 10% perpendicular: 13.0 psi
- Tensile Strength (ASTM D-1623): 30 psi
- Dimensional Stability (ASTM D-2126):
-40°F, 2 weeks: +.88% volume change
158°F, 100% RH, 2 weeks: +14% volume change
- Water Absorption (ASTM D-2842): 1.0-3.5% vol
- Closed Cell Content (ASTM D-2856): 90% minimum
- Maximum Service Temperature for Cured Foam: 240°F (116°C)
- Shelf Life: 18 months
- Use all contents within 24 hours of initial dispensing



Fast, easy set-up.

Yield Estimates:

	Board Feet	Cubic Feet
Foam Kit 15	15	1.25

Note: Theoretical yield is used as an industry standard to represent the size of 2-component foam kits. The calculation is based on ideal laboratory conditions, does not include blowing agent loss, and may vary according to application method or environmental factors.

PRODUCT	ITEM NO.	CASE PACK	CASE WT. (LBS)	CASES / PALLET
Foam Kit 15	4004520015	12	42	24

PLEASE NOTE: While product datas sheets are made as accurate as possible, please refer to our web site (www.touch-n-seal.com) for the most current product information.



Convenience products

866 Horan Drive, Fenton, MO 63026-2416 USA
1-800-325-6180 • www.touch-n-seal.com